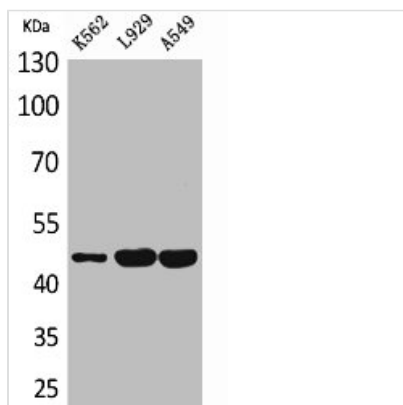




KIR3DL3 Antibody

Product Code	CSB-PA005287
Storage	Upon receipt, store at -20°C or -80°C. Avoid repeated freeze.
Uniprot No.	Q8N743
Immunogen	Synthesized peptide derived from the Internal region of Human CD158z.
Raised In	Rabbit
Species Reactivity	Human
Tested Applications	WB, ELISA; WB:1:500-1:2000, ELISA:1:20000
Form	Liquid
Conjugate	Non-conjugated
Storage Buffer	Liquid in PBS containing 50% glycerol, 0.5% BSA and 0.02% sodium azide.
Purification Method	The antibody was affinity-purified from rabbit antiserum by affinity-chromatography using epitope-specific immunogen.
Isotype	IgG
Alias	KIR3DL3; CD158Z; KIR3DL7; KIRC1; Killer cell immunoglobulin-like receptor 3DL3; CD158 antigen-like family member Z; Killer cell inhibitory receptor 1; CD158z
Immunogen Species	Homo sapiens (Human)
Target Names	KIR3DL3

Image



Western Blot analysis of K562 L929 A549 cells using CD158z Polyclonal Antibody

Usage

For Research Use Only. Not for use in diagnostic or therapeutic procedures.