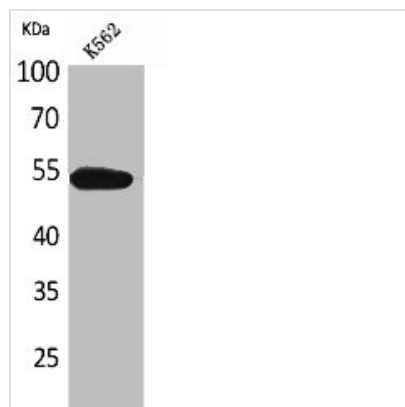




SIGLEC8 Antibody

Product Code	CSB-PA005297
Storage	Upon receipt, store at -20°C or -80°C. Avoid repeated freeze.
Uniprot No.	Q9NYZ4
Immunogen	Synthesized peptide derived from the Internal region of Human CD329.
Raised In	Rabbit
Species Reactivity	Human
Tested Applications	WB, ELISA; WB:1:500-1:2000, ELISA:1:20000
Form	Liquid
Conjugate	Non-conjugated
Storage Buffer	Liquid in PBS containing 50% glycerol, 0.5% BSA and 0.02% sodium azide.
Purification Method	The antibody was affinity-purified from rabbit antiserum by affinity-chromatography using epitope-specific immunogen.
Isotype	IgG
Alias	SIGLEC8; SAF2; Sialic acid-binding Ig-like lectin 8; Siglec-8; CDw329; Sialoadhesin family member 2; SAF-2; CD329
Immunogen Species	Homo sapiens (Human)
Target Names	SIGLEC8

Image



Western Blot analysis of K562 cells using CD329 Polyclonal Antibody