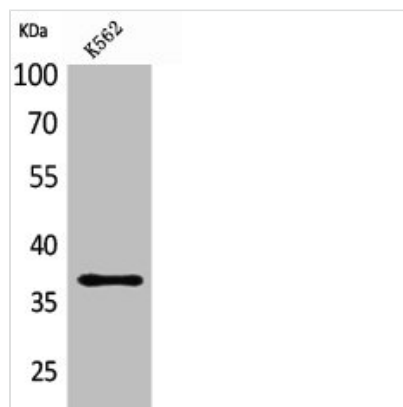




SLAMF1 Antibody

Product Code	CSB-PA005298
Storage	Upon receipt, store at -20°C or -80°C. Avoid repeated freeze.
Uniprot No.	Q13291
Immunogen	Synthesized peptide derived from the region of Human SLAM.
Raised In	Rabbit
Species Reactivity	Human,Rat,Mouse
Tested Applications	WB, ELISA; WB:1:500-1:2000, ELISA:1:20000
Form	Liquid
Conjugate	Non-conjugated
Storage Buffer	Liquid in PBS containing 50% glycerol, 0.5% BSA and 0.02% sodium azide.
Purification Method	The antibody was affinity-purified from rabbit antiserum by affinity-chromatography using epitope-specific immunogen.
Isotype	IgG
Product Type	Polyclonal Antibody
Immunogen Species	Homo sapiens (Human)
Target Names	SLAMF1

Image



Western Blot analysis of K562 cells using SLAMF1 Polyclonal Antibody

Usage

For Research Use Only. Not for use in diagnostic or therapeutic procedures.