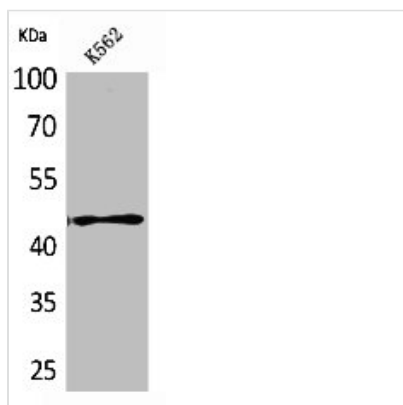




RHAG Antibody

| | |
|----------------------------|--|
| Product Code | CSB-PA005318 |
| Storage | Upon receipt, store at -20°C or -80°C. Avoid repeated freeze. |
| Uniprot No. | Q02094 |
| Immunogen | Synthesized peptide derived from the N-terminal region of Human CD241. |
| Raised In | Rabbit |
| Species Reactivity | Human |
| Tested Applications | WB, ELISA; WB:1:500-1:2000, ELISA:1:20000 |
| Form | Liquid |
| Conjugate | Non-conjugated |
| Storage Buffer | Liquid in PBS containing 50% glycerol, 0.5% BSA and 0.02% sodium azide. |
| Purification Method | The antibody was affinity-purified from rabbit antiserum by affinity-chromatography using epitope-specific immunogen. |
| Isotype | IgG |
| Alias | RHAG; RH50; Ammonium transporter Rh type A; Erythrocyte membrane glycoprotein Rh50; Erythrocyte plasma membrane 50 kDa glycoprotein; Rh50A; Rhesus blood group family type A glycoprotein; |
| Immunogen Species | Homo sapiens (Human) |
| Target Names | RHAG |

Image



Western Blot analysis of K562 cells using CD241 Polyclonal Antibody

Usage For Research Use Only. Not for use in diagnostic or therapeutic procedures.