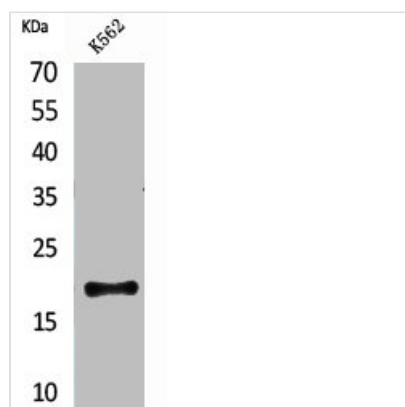




CD160 Antibody

Product Code	CSB-PA005323
Storage	Upon receipt, store at -20°C or -80°C. Avoid repeated freeze.
Uniprot No.	O95971
Immunogen	Synthesized peptide derived from the Internal region of Human CD160.
Raised In	Rabbit
Species Reactivity	Human
Tested Applications	WB, ELISA; WB:1:500-1:2000, ELISA:1:20000
Form	Liquid
Conjugate	Non-conjugated
Storage Buffer	Liquid in PBS containing 50% glycerol, 0.5% BSA and 0.02% sodium azide.
Purification Method	The antibody was affinity-purified from rabbit antiserum by affinity-chromatography using epitope-specific immunogen.
Isotype	IgG
Alias	CD160; BY55; CD160 antigen; Natural killer cell receptor BY55; CD160
Immunogen Species	Homo sapiens (Human)
Target Names	CD160

Image



Western Blot analysis of K562 cells using CD160 Polyclonal Antibody