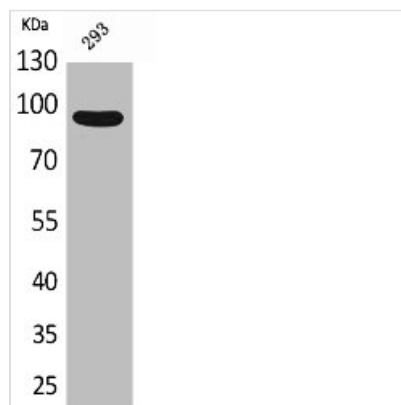




CDCP1 Antibody

Product Code	CSB-PA005337
Storage	Upon receipt, store at -20°C or -80°C. Avoid repeated freeze.
Uniprot No.	Q9H5V8
Immunogen	Synthesized peptide derived from the Internal region of Human CDCP1.
Raised In	Rabbit
Species Reactivity	Human, Mouse, Rat
Tested Applications	WB, ELISA; WB:1:500-1:2000, ELISA:1:20000
Form	Liquid
Conjugate	Non-conjugated
Storage Buffer	Liquid in PBS containing 50% glycerol, 0.5% BSA and 0.02% sodium azide.
Purification Method	The antibody was affinity-purified from rabbit antiserum by affinity-chromatography using epitope-specific immunogen.
Isotype	IgG
Alias	CDCP1; TRASK; CUB domain-containing protein 1; Membrane glycoprotein gp140; Subtractive immunization M plus HEp3-associated 135 kDa protein; SIMA135; Transmembrane and associated with src kinases; CD318
Immunogen Species	Homo sapiens (Human)
Target Names	CDCP1

Image



Western Blot analysis of 293 cells using CDCP1 Polyclonal Antibody

Usage For Research Use Only. Not for use in diagnostic or therapeutic procedures.