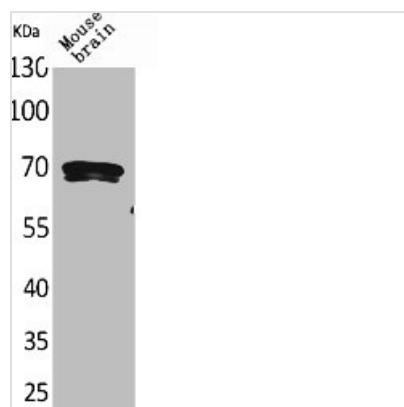




BIN1 Antibody

Product Code	CSB-PA005457
Storage	Upon receipt, store at -20°C or -80°C. Avoid repeated freeze.
Uniprot No.	O00499
Immunogen	Synthesized peptide derived from the C-terminal region of Human Amphiphysin II.
Raised In	Rabbit
Species Reactivity	Human,Mouse,Rat
Tested Applications	WB, ELISA; WB:1:500-1:2000, ELISA:1:20000
Form	Liquid
Conjugate	Non-conjugated
Storage Buffer	Liquid in PBS containing 50% glycerol, 0.5% BSA and 0.02% sodium azide.
Purification Method	The antibody was affinity-purified from rabbit antiserum by affinity-chromatography using epitope-specific immunogen.
Isotype	IgG
Alias	BIN1; AMPHL; Myc box-dependent-interacting protein 1; Amphiphysin II; Amphiphysin-like protein; Box-dependent myc-interacting protein 1; Bridging integrator 1
Immunogen Species	Homo sapiens (Human)
Target Names	BIN1

Image



Western Blot analysis of mouse brain cells using Amphiphysin II Polyclonal Antibody

Usage For Research Use Only. Not for use in diagnostic or therapeutic procedures.