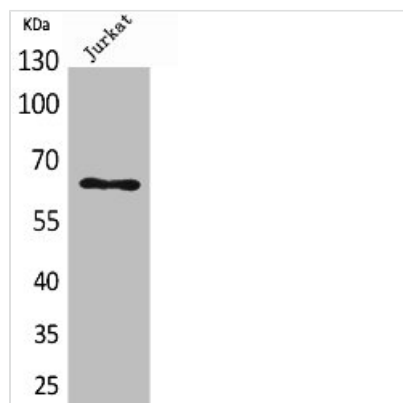




KRT2 Antibody

Product Code	CSB-PA005499
Storage	Upon receipt, store at -20°C or -80°C. Avoid repeated freeze.
Uniprot No.	P35908
Immunogen	Synthesized peptide derived from Human Keratin-pan around the non-acetylation site of K185.
Raised In	Rabbit
Species Reactivity	Human, Mouse, Rat
Tested Applications	WB, ELISA; WB:1:500-1:2000, ELISA:1:20000
Form	Liquid
Conjugate	Non-conjugated
Storage Buffer	Liquid in PBS containing 50% glycerol, 0.5% BSA and 0.02% sodium azide.
Purification Method	The antibody was affinity-purified from rabbit antiserum by affinity-chromatography using epitope-specific immunogen.
Isotype	IgG
Alias	KRT2; KRT76; KRT3; KRT5; KRT6A; KRT6B; KRT6C; KRT71; KRT72; KRT73; KRT74; KRT75; KRT79; KRT8; KRT84; Keratin, type II cytoskeletal 2 epidermal; Keratin, type II cytoskeletal 2 oral; Keratin, type II cytoskeletal 3; Keratin, type II cytoskeletal 5;
Immunogen Species	Homo sapiens (Human)
Target Names	KRT2

Image



Western Blot analysis of Jurkat cells using Keratin-pan Polyclonal Antibody

Usage

For Research Use Only. Not for use in diagnostic or therapeutic procedures.