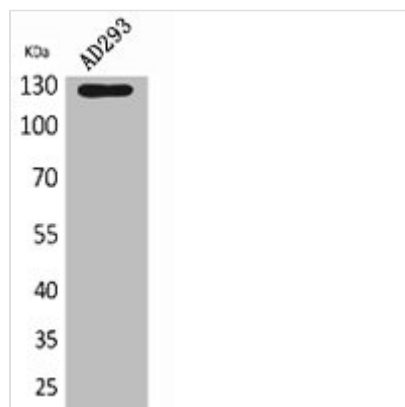




ABL2 Antibody

Product Code	CSB-PA005570
Storage	Upon receipt, store at -20°C or -80°C. Avoid repeated freeze.
Uniprot No.	P42684
Immunogen	Synthesized peptide derived from the Internal region of Human Arg.
Raised In	Rabbit
Species Reactivity	Human,Mouse,Rat
Tested Applications	WB, ELISA; WB:1:500-1:2000, ELISA:1:20000
Form	Liquid
Conjugate	Non-conjugated
Storage Buffer	Liquid in PBS containing 50% glycerol, 0.5% BSA and 0.02% sodium azide.
Purification Method	The antibody was affinity-purified from rabbit antiserum by affinity-chromatography using epitope-specific immunogen.
Isotype	IgG
Alias	ABL2; ABLL; ARG; Abelson tyrosine-protein kinase 2; Abelson murine leukemia viral oncogene homolog 2; Abelson-related gene protein; Tyrosine-protein kinase ARG
Immunogen Species	Homo sapiens (Human)
Target Names	ABL2

Image



Western Blot analysis of AD293 cells using Arg Polyclonal Antibody.