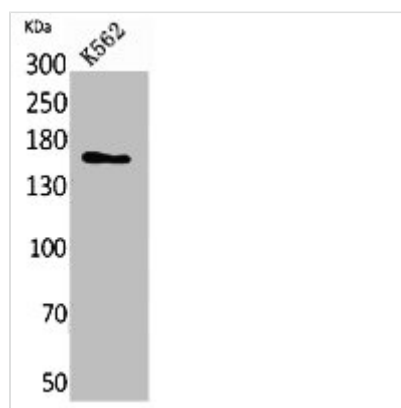




LAMC2 Antibody

Product Code	CSB-PA005613
Storage	Upon receipt, store at -20°C or -80°C. Avoid repeated freeze.
Uniprot No.	Q13753
Immunogen	Synthesized peptide derived from the C-terminal region of Human Laminin γ -2.
Raised In	Rabbit
Species Reactivity	Human,Rat
Tested Applications	WB, ELISA; WB:1:500-1:2000, ELISA:1:20000
Form	Liquid
Conjugate	Non-conjugated
Storage Buffer	Liquid in PBS containing 50% glycerol, 0.5% BSA and 0.02% sodium azide.
Purification Method	The antibody was affinity-purified from rabbit antiserum by affinity-chromatography using epitope-specific immunogen.
Isotype	IgG
Alias	LAMC2; LAMB2T; LAMNB2; Laminin subunit gamma-2; Cell-scattering factor 140 kDa subunit; CSF 140 kDa subunit; Epiligrin subunit gamma; Kalinin subunit gamma; Kalinin/nicein/epiligrin 100 kDa subunit
Immunogen Species	Homo sapiens (Human)
Target Names	LAMC2

Image



Western Blot analysis of K562 cells using Laminin γ -2 Polyclonal Antibody.

Usage For Research Use Only. Not for use in diagnostic or therapeutic procedures.