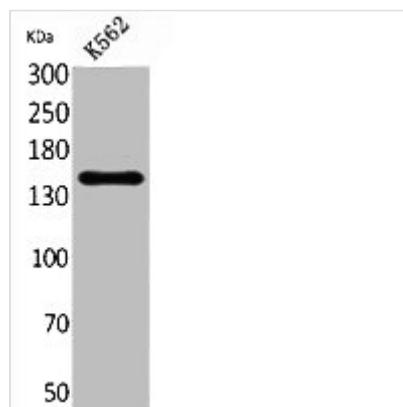




RFC1 Antibody

Product Code	CSB-PA005621
Storage	Upon receipt, store at -20°C or -80°C. Avoid repeated freeze.
Uniprot No.	P35251
Immunogen	Synthesized peptide derived from the C-terminal region of Human RFC1.
Raised In	Rabbit
Species Reactivity	Human
Tested Applications	WB, ELISA; WB:1:500-1:2000, ELISA:1:20000
Form	Liquid
Conjugate	Non-conjugated
Storage Buffer	Liquid in PBS containing 50% glycerol, 0.5% BSA and 0.02% sodium azide.
Purification Method	The antibody was affinity-purified from rabbit antiserum by affinity-chromatography using epitope-specific immunogen.
Isotype	IgG
Alias	RFC1; RFC140; Replication factor C subunit 1; Activator 1 140 kDa subunit; A1 140 kDa subunit; Activator 1 large subunit; Activator 1 subunit 1; DNA-binding protein PO-GA
Immunogen Species	Homo sapiens (Human)
Target Names	RFC1

Image



Western Blot analysis of K562 cells using RFC1 Polyclonal Antibody.

Usage For Research Use Only. Not for use in diagnostic or therapeutic procedures.