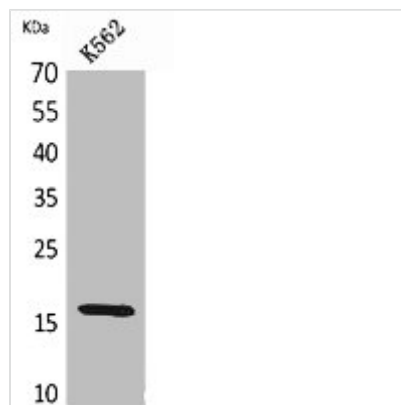




RBP2 Antibody

Product Code	CSB-PA005623
Storage	Upon receipt, store at -20°C or -80°C. Avoid repeated freeze.
Uniprot No.	P50120
Immunogen	Synthesized peptide derived from the Internal region of Human CRBP II.
Raised In	Rabbit
Species Reactivity	Human,Mouse,Rat
Tested Applications	WB, ELISA; WB:1:500-1:2000, ELISA:1:20000
Form	Liquid
Conjugate	Non-conjugated
Storage Buffer	Liquid in PBS containing 50% glycerol, 0.5% BSA and 0.02% sodium azide.
Purification Method	The antibody was affinity-purified from rabbit antiserum by affinity-chromatography using epitope-specific immunogen.
Isotype	IgG
Alias	RBP2; CRBP2; Retinol-binding protein 2; Cellular retinol-binding protein II; CRBP-II
Immunogen Species	Homo sapiens (Human)
Target Names	RBP2

Image



Western Blot analysis of K562 cells using CRBP II Polyclonal Antibody.

Usage

For Research Use Only. Not for use in diagnostic or therapeutic procedures.