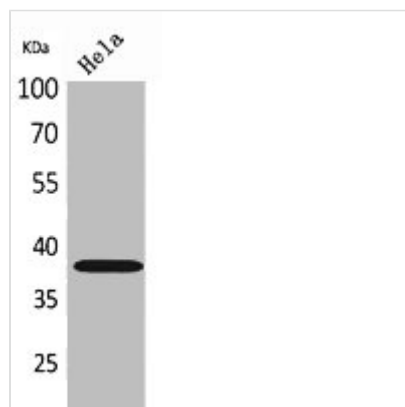




KIR2DL3/KIR2DS2 Antibody

Product Code	CSB-PA005659
Storage	Upon receipt, store at -20°C or -80°C. Avoid repeated freeze.
Uniprot No.	P43628/P43631
Immunogen	Synthesized peptide derived from the Internal region of Human CD158b2/j.
Raised In	Rabbit
Species Reactivity	Human
Tested Applications	WB, ELISA; WB:1:500-1:2000, ELISA:1:20000
Form	Liquid
Conjugate	Non-conjugated
Storage Buffer	Liquid in PBS containing 50% glycerol, 0.5% BSA and 0.02% sodium azide.
Purification Method	The antibody was affinity-purified from rabbit antiserum by affinity-chromatography using epitope-specific immunogen.
Isotype	IgG
Alias	KIR2DL3; CD158B2; KIRCL23; NKAT2; Killer cell immunoglobulin-like receptor 2DL3; CD158 antigen-like family member B2; KIR-023GB; Killer inhibitory receptor cl 2-3; MHC class I NK cell receptor; NKAT2a; NKAT2b
Immunogen Species	Homo sapiens (Human)
Target Names	KIR2DL3/KIR2DS2

Image



Western Blot analysis of HeLa cells using CD158b2/j Polyclonal Antibody.