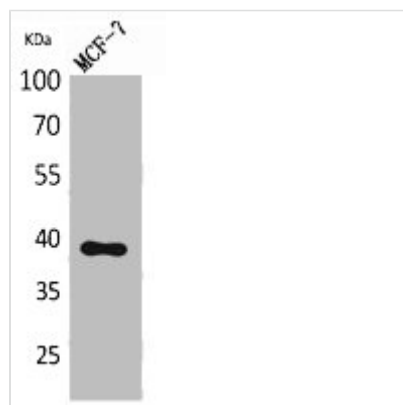




NOV Antibody

Product Code	CSB-PA005674
Storage	Upon receipt, store at -20°C or -80°C. Avoid repeated freeze.
Uniprot No.	P48745
Immunogen	Synthesized peptide derived from the Internal region of Human Nov.
Raised In	Rabbit
Species Reactivity	Human, Mouse
Tested Applications	WB, ELISA; WB:1:500-1:2000, ELISA:1:20000
Form	Liquid
Conjugate	Non-conjugated
Storage Buffer	Liquid in PBS containing 50% glycerol, 0.5% BSA and 0.02% sodium azide.
Purification Method	The antibody was affinity-purified from rabbit antiserum by affinity-chromatography using epitope-specific immunogen.
Isotype	IgG
Alias	NOV; CCN3; IGFBP9; NOVH; Protein NOV homolog; NovH; CCN family member 3; Insulin-like growth factor-binding protein 9; IBP-9; IGF-binding protein 9; IGFBP-9; Nephroblastoma-overexpressed gene protein homolog
Immunogen Species	Homo sapiens (Human)
Target Names	NOV

Image



Western Blot analysis of MCF-7 cells using Nov Polyclonal Antibody.