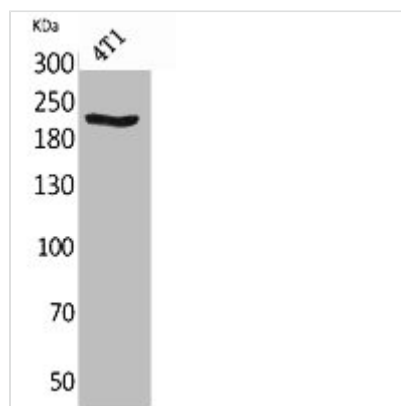




# MYH1/MYH2/MYH3/MYH4/MYH6/MYH7/MYH8 Antibody

<b>Product Code</b>	CSB-PA005730
<b>Storage</b>	Upon receipt, store at -20°C or -80°C. Avoid repeated freeze.
<b>Uniprot No.</b>	P12882/Q9UKX2/P11055/Q9Y623/P13533/P12883/P13535
<b>Immunogen</b>	Synthesized peptide derived from Human MYH-pan around the non-acetylation site of K1394.
<b>Raised In</b>	Rabbit
<b>Species Reactivity</b>	Human,Mouse,Rat
<b>Tested Applications</b>	WB, ELISA; WB:1:500-1:2000, ELISA:1:20000
<b>Form</b>	Liquid
<b>Conjugate</b>	Non-conjugated
<b>Storage Buffer</b>	Liquid in PBS containing 50% glycerol, 0.5% BSA and 0.02% sodium azide.
<b>Purification Method</b>	The antibody was affinity-purified from rabbit antiserum by affinity-chromatography using epitope-specific immunogen.
<b>Isotype</b>	IgG
<b>Alias</b>	MYH1; Myosin-1; Myosin heavy chain 1; Myosin heavy chain 2x; MyHC-2x; Myosin heavy chain IIx/d; MyHC-IIx/d; Myosin heavy chain, skeletal muscle, adult 1; MYH2; MYHSA2; Myosin-2; Myosin heavy chain 2
<b>Immunogen Species</b>	Homo sapiens (Human)
<b>Target Names</b>	MYH1/MYH2/MYH3/MYH4/MYH6/MYH7/MYH8

## Image



Western Blot analysis of 4T1 cells using MYH-pan Polyclonal Antibody.