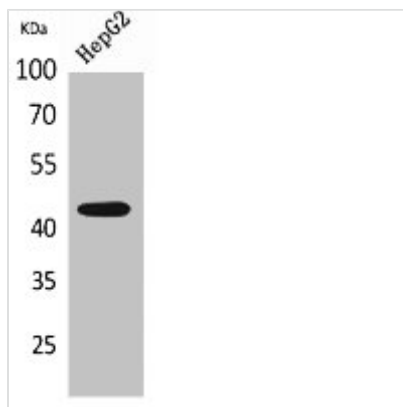




PTGER1 Antibody

Product Code	CSB-PA005788
Storage	Upon receipt, store at -20°C or -80°C. Avoid repeated freeze.
Uniprot No.	P34995
Immunogen	Synthesized peptide derived from the Internal region of Human EP1.
Raised In	Rabbit
Species Reactivity	Human
Tested Applications	WB, ELISA; WB:1:500-1:2000, ELISA:1:20000
Form	Liquid
Conjugate	Non-conjugated
Storage Buffer	Liquid in PBS containing 50% glycerol, 0.5% BSA and 0.02% sodium azide.
Purification Method	The antibody was affinity-purified from rabbit antiserum by affinity-chromatography using epitope-specific immunogen.
Isotype	IgG
Alias	PTGER1; Prostaglandin E2 receptor EP1 subtype; PGE receptor EP1 subtype; PGE2 receptor EP1 subtype; Prostanoid EP1 receptor
Immunogen Species	Homo sapiens (Human)
Target Names	PTGER1

Image



Western Blot analysis of HepG2 cells using EP1 Polyclonal Antibody.

Usage

For Research Use Only. Not for use in diagnostic or therapeutic procedures.