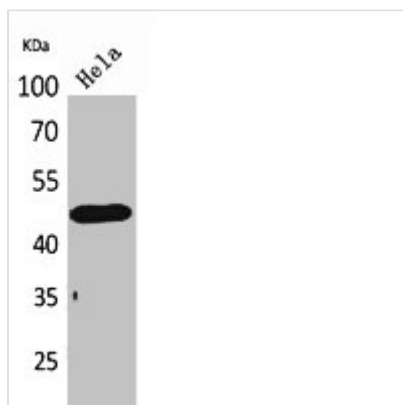




DRD3 Antibody

Product Code	CSB-PA005795
Storage	Upon receipt, store at -20°C or -80°C. Avoid repeated freeze.
Uniprot No.	P35462
Immunogen	Synthesized peptide derived from the Internal region of Human D3DR.
Raised In	Rabbit
Species Reactivity	Human,Mouse,Rat
Tested Applications	WB, ELISA; WB:1:500-1:2000, ELISA:1:20000
Form	Liquid
Conjugate	Non-conjugated
Storage Buffer	Liquid in PBS containing 50% glycerol, 0.5% BSA and 0.02% sodium azide.
Purification Method	The antibody was affinity-purified from rabbit antiserum by affinity-chromatography using epitope-specific immunogen.
Isotype	IgG
Alias	DRD3; D(3) dopamine receptor; Dopamine D3 receptor
Immunogen Species	Homo sapiens (Human)
Target Names	DRD3

Image



Western Blot analysis of HeLa cells using D3DR Polyclonal Antibody.

Usage

For Research Use Only. Not for use in diagnostic or therapeutic procedures.