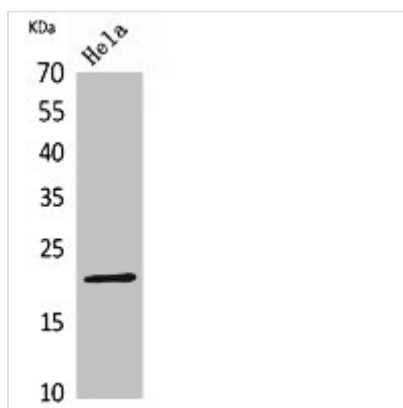




CD3E Antibody

Product Code	CSB-PA005833
Storage	Upon receipt, store at -20°C or -80°C. Avoid repeated freeze.
Uniprot No.	P07766
Immunogen	Synthesized peptide derived from the Internal region of Human CD3-ε.
Raised In	Rabbit
Species Reactivity	Human
Tested Applications	WB, ELISA; WB:1:500-1:2000, ELISA:1:20000
Form	Liquid
Conjugate	Non-conjugated
Storage Buffer	Liquid in PBS containing 50% glycerol, 0.5% BSA and 0.02% sodium azide.
Purification Method	The antibody was affinity-purified from rabbit antiserum by affinity-chromatography using epitope-specific immunogen.
Isotype	IgG
Alias	CD3E; T3E; T-cell surface glycoprotein CD3 epsilon chain; T-cell surface antigen T3/Leu-4 epsilon chain; CD3e
Immunogen Species	Homo sapiens (Human)
Target Names	CD3E

Image



Western Blot analysis of HeLa cells using CD3-ε Polyclonal Antibody.

Usage

For Research Use Only. Not for use in diagnostic or therapeutic procedures.