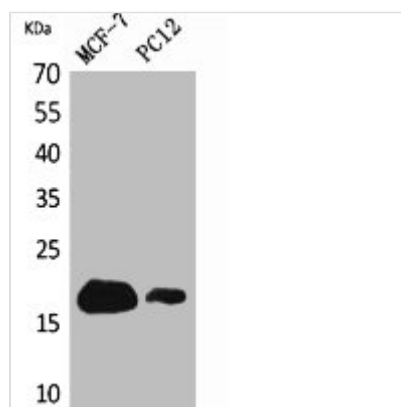




IFITM1 Antibody

Product Code	CSB-PA005866
Storage	Upon receipt, store at -20°C or -80°C. Avoid repeated freeze.
Uniprot No.	P13164
Immunogen	Synthesized peptide derived from the N-terminal region of Human CD225.
Raised In	Rabbit
Species Reactivity	Human
Tested Applications	WB, ELISA; WB:1:500-1:2000, ELISA:1:20000
Form	Liquid
Conjugate	Non-conjugated
Storage Buffer	Liquid in PBS containing 50% glycerol, 0.5% BSA and 0.02% sodium azide.
Purification Method	The antibody was affinity-purified from rabbit antiserum by affinity-chromatography using epitope-specific immunogen.
Isotype	IgG
Alias	IFITM1; CD225; IFI17; Interferon-induced transmembrane protein 1; Dispanin subfamily A member 2a; DSPA2a; Interferon-induced protein 17; Interferon-inducible protein 9-27; Leu-13 antigen; CD225
Immunogen Species	Homo sapiens (Human)
Target Names	IFITM1

Image



Western Blot analysis of MCF7, PC12 cells using CD225 Polyclonal Antibody.

Usage For Research Use Only. Not for use in diagnostic or therapeutic procedures.