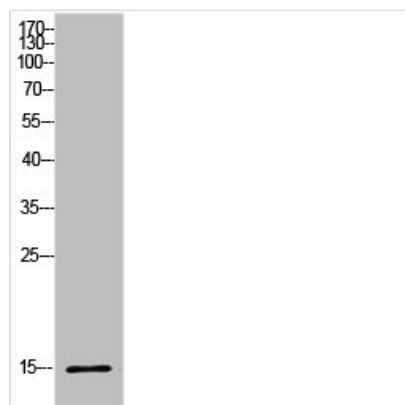




Histone H2B Antibody

Product Code	CSB-PA005943
Storage	Upon receipt, store at -20°C or -80°C. Avoid repeated freeze.
Uniprot No.	P33778/P62807/P58876/Q93079/P06899/O60814/Q99880/Q99879/Q99877/P23527
Immunogen	Synthesized peptide derived from the Internal region of Human Histone H2B.
Raised In	Rabbit
Species Reactivity	Human,Mouse,Rat
Tested Applications	WB, ELISA; WB:1:500-1:2000, ELISA:1:20000
Form	Liquid
Conjugate	Non-conjugated
Storage Buffer	Liquid in PBS containing 50% glycerol, 0.5% BSA and 0.02% sodium azide.
Purification Method	The antibody was affinity-purified from rabbit antiserum by affinity-chromatography using epitope-specific immunogen.
Isotype	IgG
Alias	HIST1H2BB; H2BFF; Histone H2B type 1-B; Histone H2B.1; Histone H2B.f; H2B/f; HIST1H2BC; H2BFL; HIST1H2BE; H2BFH; HIST1H2BF; H2BFG; HIST1H2BG; H2BFA; HIST1H2BI; H2BFK; Histone H2B type 1-C/E/F/G/I; Histone H2B.1 A; Histone H2B.a; H2B/a; Histone H2B.g; H2B/
Immunogen Species	Homo sapiens (Human)
Target Names	HIST1H2BB/HIST1H2BC/HIST1H2BD/HIST1H2BH/HIST1H2BJ/HIST1H2BK/HIST1H2BL/HIST1H2BM/HIST1H2BN/HIST1H2BO

Image



Western Blot analysis of HeLa cells using Histone H2B Polyclonal Antibody