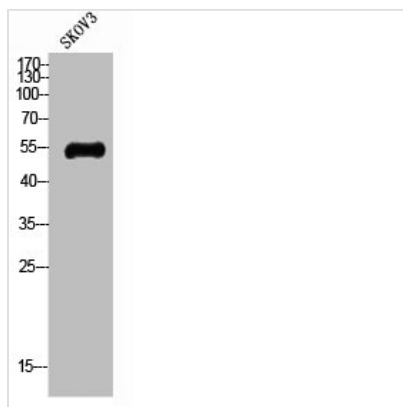




SLC2A4 Antibody

Product Code	CSB-PA006036
Storage	Upon receipt, store at -20°C or -80°C. Avoid repeated freeze.
Uniprot No.	P14672
Immunogen	Synthesized peptide derived from the N-terminal region of Human Glut4.
Raised In	Rabbit
Species Reactivity	Human,Mouse,Rat
Tested Applications	WB, ELISA; WB:1:500-1:2000, ELISA:1:20000
Form	Liquid
Conjugate	Non-conjugated
Storage Buffer	Liquid in PBS containing 50% glycerol, 0.5% BSA and 0.02% sodium azide.
Purification Method	The antibody was affinity-purified from rabbit antiserum by affinity-chromatography using epitope-specific immunogen.
Isotype	IgG
Alias	SLC2A4; GLUT4; Solute carrier family 2, facilitated glucose transporter member 4; Glucose transporter type 4, insulin-responsive; GLUT-4
Immunogen Species	Homo sapiens (Human)
Target Names	SLC2A4

Image



Western Blot analysis of SKOV3 cells using Glut4 Polyclonal Antibody