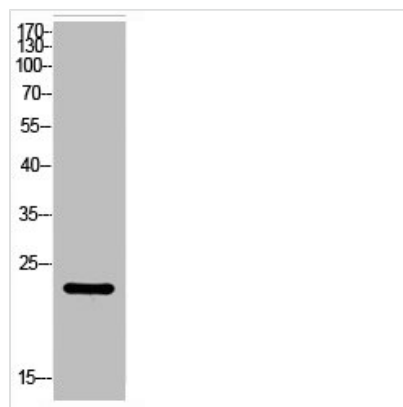




GFER Antibody

Product Code	CSB-PA006059
Storage	Upon receipt, store at -20°C or -80°C. Avoid repeated freeze.
Uniprot No.	P55789
Immunogen	Synthesized peptide derived from the Internal region of Human ALR.
Raised In	Rabbit
Species Reactivity	Human,Mouse,Rat
Tested Applications	WB, ELISA; WB:1:500-1:2000, ELISA:1:20000
Form	Liquid
Conjugate	Non-conjugated
Storage Buffer	Liquid in PBS containing 50% glycerol, 0.5% BSA and 0.02% sodium azide.
Purification Method	The antibody was affinity-purified from rabbit antiserum by affinity-chromatography using epitope-specific immunogen.
Isotype	IgG
Alias	GFER; ALR; HERV1; HPO; FAD-linked sulfhydryl oxidase ALR; Augmenter of liver regeneration; hERV1; Hepatopoietin
Immunogen Species	Homo sapiens (Human)
Target Names	GFER

Image



Western Blot analysis of HBE cells using ALR Polyclonal Antibody

Usage

For Research Use Only. Not for use in diagnostic or therapeutic procedures.