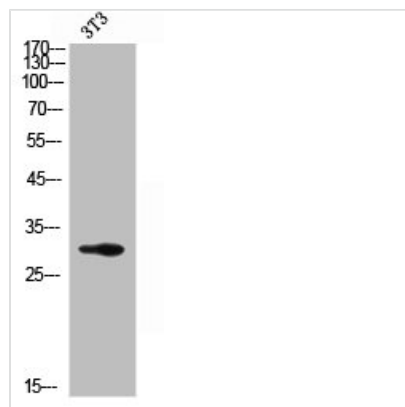




KLK3 Antibody

Product Code	CSB-PA006113
Storage	Upon receipt, store at -20°C or -80°C. Avoid repeated freeze.
Uniprot No.	P07288
Immunogen	Synthesized peptide derived from the Internal region of Human PSA.
Raised In	Rabbit
Species Reactivity	Human
Tested Applications	WB, ELISA; WB:1:500-1:2000, ELISA:1:10000
Form	Liquid
Conjugate	Non-conjugated
Storage Buffer	Liquid in PBS containing 50% glycerol, 0.5% BSA and 0.02% sodium azide.
Purification Method	The antibody was affinity-purified from rabbit antiserum by affinity-chromatography using epitope-specific immunogen.
Isotype	IgG
Alias	KLK3; APS; Prostate-specific antigen; PSA; Gamma-seminoprotein; Semin; Kallikrein-3; P-30 antigen; Semenogelase
Immunogen Species	Homo sapiens (Human)
Target Names	KLK3

Image



Western Blot analysis of NIH-3T3 cells using PSA Polyclonal Antibody