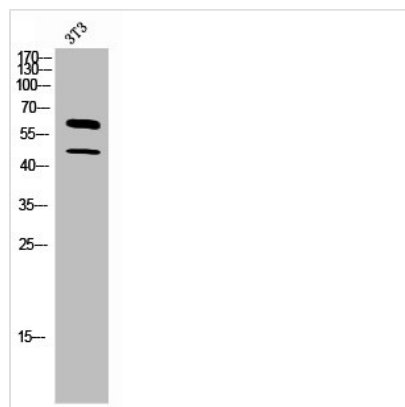




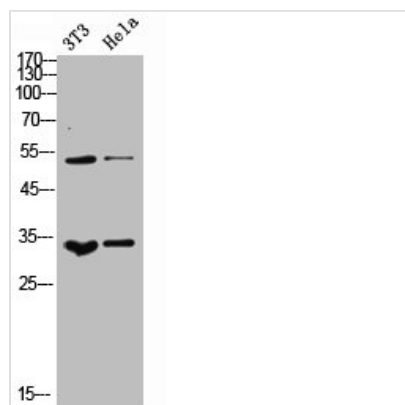
CSF1 Antibody

Product Code	CSB-PA006115
Storage	Upon receipt, store at -20°C or -80°C. Avoid repeated freeze.
Uniprot No.	P09603
Immunogen	Synthesized peptide derived from the C-terminal region of Human M-CSF.
Raised In	Rabbit
Species Reactivity	Human
Tested Applications	WB, ELISA; WB:1:500-1:2000, ELISA:1:10000
Form	Liquid
Conjugate	Non-conjugated
Storage Buffer	Liquid in PBS containing 50% glycerol, 0.5% BSA and 0.02% sodium azide.
Purification Method	The antibody was affinity-purified from rabbit antiserum by affinity-chromatography using epitope-specific immunogen.
Isotype	IgG
Alias	CSF1; Macrophage colony-stimulating factor 1; CSF-1; M-CSF; MCSF; Lanimostim
Immunogen Species	Homo sapiens (Human)
Target Names	CSF1

Image



Western Blot analysis of 3T3 cells using M-CSF Polyclonal Antibody



Western Blot analysis of NIH-3T3 HeLa cells
using M-CSF Polyclonal Antibody