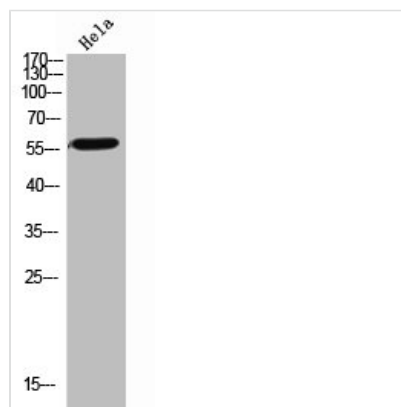




ENTPD1 Antibody

Product Code	CSB-PA006195
Storage	Upon receipt, store at -20°C or -80°C. Avoid repeated freeze.
Uniprot No.	P49961
Immunogen	Synthesized peptide derived from the Internal region of Human CD39.
Raised In	Rabbit
Species Reactivity	Human,Mouse,Rat
Tested Applications	WB, ELISA; WB:1:500-1:2000, ELISA:1:10000
Form	Liquid
Conjugate	Non-conjugated
Storage Buffer	Liquid in PBS containing 50% glycerol, 0.5% BSA and 0.02% sodium azide.
Purification Method	The antibody was affinity-purified from rabbit antiserum by affinity-chromatography using epitope-specific immunogen.
Isotype	IgG
Alias	ENTPD1; CD39; Ectonucleoside triphosphate diphosphohydrolase 1; NTPDase 1; Ecto-ATP diphosphohydrolase 1; Ecto-ATPDase 1; Ecto-ATPase 1; Ecto-apyrase; Lymphoid cell activation antigen; CD39
Immunogen Species	Homo sapiens (Human)
Target Names	ENTPD1

Image



Western Blot analysis of HeLa cells using CD39 Polyclonal Antibody

Usage

For Research Use Only. Not for use in diagnostic or therapeutic procedures.