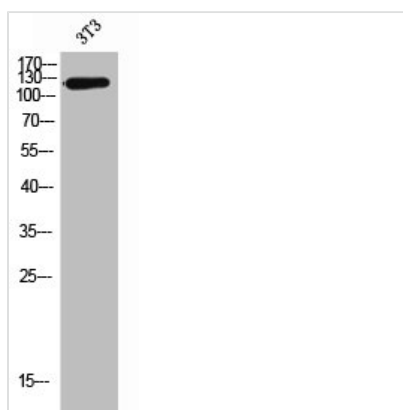




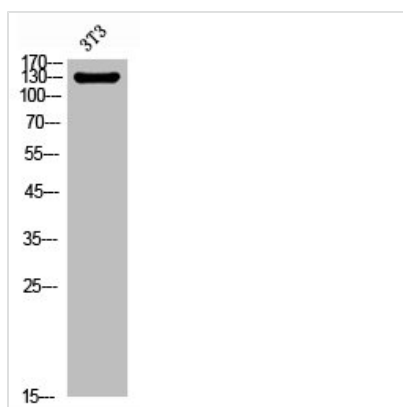
ITGA6 Antibody

Product Code	CSB-PA006199
Storage	Upon receipt, store at -20°C or -80°C. Avoid repeated freeze.
Uniprot No.	P23229
Immunogen	Synthesized peptide derived from the Internal region of Human Integrin $\alpha 6$.
Raised In	Rabbit
Species Reactivity	Human, Mouse, Rat
Tested Applications	WB, ELISA; WB:1:500-1:2000, ELISA:1:10000
Form	Liquid
Conjugate	Non-conjugated
Storage Buffer	Liquid in PBS containing 50% glycerol, 0.5% BSA and 0.02% sodium azide.
Purification Method	The antibody was affinity-purified from rabbit antiserum by affinity-chromatography using epitope-specific immunogen.
Isotype	IgG
Alias	ITGA6; Integrin alpha-6; CD49 antigen-like family member F; VLA-6; CD49f
Immunogen Species	Homo sapiens (Human)
Target Names	ITGA6

Image



Western Blot analysis of 3T3 cells using Integrin $\alpha 6$ Polyclonal Antibody



Western Blot analysis of NIH-3T3 cells using Integrin $\alpha 6$ Polyclonal Antibody



Usage

For Research Use Only. Not for use in diagnostic or therapeutic procedures.