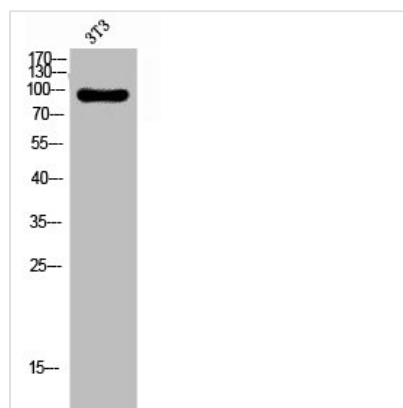




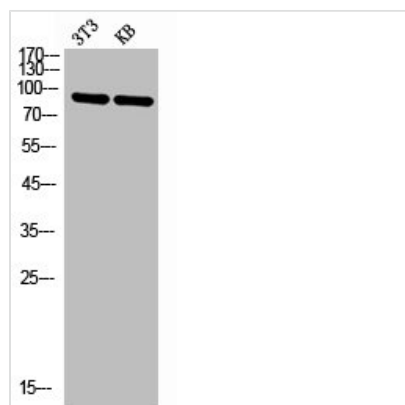
# SELP Antibody

|                            |  |
|----------------------------|--|
| <b>Product Code</b>        | CSB-PA006202   |
| <b>Storage</b>             | Upon receipt, store at -20°C or -80°C. Avoid repeated freeze.  |
| <b>Uniprot No.</b>         | P16109   |
| <b>Immunogen</b>           | Synthesized peptide derived from the N-terminal region of Human P-Selectin.  |
| <b>Raised In</b>           | Rabbit   |
| <b>Species Reactivity</b>  | Human,Mouse,Rat  |
| <b>Tested Applications</b> | WB, ELISA; WB:1:500-1:2000, ELISA:1:10000  |
| <b>Form</b>                | Liquid   |
| <b>Conjugate</b>           | Non-conjugated   |
| <b>Storage Buffer</b>      | Liquid in PBS containing 50% glycerol, 0.5% BSA and 0.02% sodium azide.  |
| <b>Purification Method</b> | The antibody was affinity-purified from rabbit antiserum by affinity-chromatography using epitope-specific immunogen.  |
| <b>Isotype</b>             | IgG  |
| <b>Alias</b>               | SELP; GMRP; GRMP; P-selectin; CD62 antigen-like family member P; Granule membrane protein 140; GMP-140; Leukocyte-endothelial cell adhesion molecule 3; LECAM3; Platelet activation dependent granule-external membrane protein; PADGEM; CD62P |
| <b>Immunogen Species</b>   | Homo sapiens (Human)   |
| <b>Target Names</b>        | SELP   |

## Image



Western Blot analysis of 3T3 cells using P-Selectin Polyclonal Antibody



Western Blot analysis of NIH-3T3 KB cells using  
P-Selectin Polyclonal Antibody