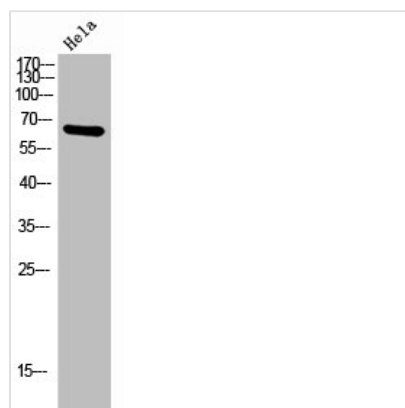




LILRB2 Antibody

Product Code	CSB-PA006212
Storage	Upon receipt, store at -20°C or -80°C. Avoid repeated freeze.
Uniprot No.	Q8N423
Immunogen	Synthesized peptide derived from the Internal region of Human CD85d.
Raised In	Rabbit
Species Reactivity	Human
Tested Applications	WB, ELISA; WB:1:500-1:2000, ELISA:1:10000
Form	Liquid
Conjugate	Non-conjugated
Storage Buffer	Liquid in PBS containing 50% glycerol, 0.5% BSA and 0.02% sodium azide.
Purification Method	The antibody was affinity-purified from rabbit antiserum by affinity-chromatography using epitope-specific immunogen.
Isotype	IgG
Alias	LILRB2; ILT4; LIR2; MIR10; Leukocyte immunoglobulin-like receptor subfamily B member 2; LIR-2; Leukocyte immunoglobulin-like receptor 2; CD85 antigen-like family member D; Immunoglobulin-like transcript 4; ILT-4; Monocyte/macrophage immunoglobulin-like re
Immunogen Species	Homo sapiens (Human)
Target Names	LILRB2

Image



Western Blot analysis of HeLa cells using CD85d Polyclonal Antibody

Usage

For Research Use Only. Not for use in diagnostic or therapeutic procedures.