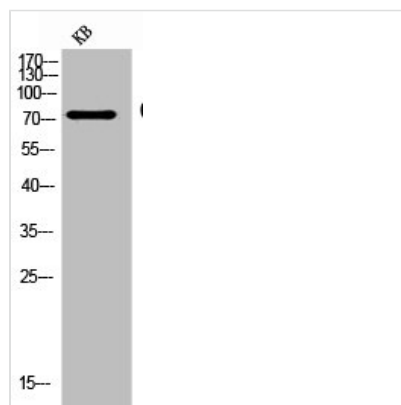




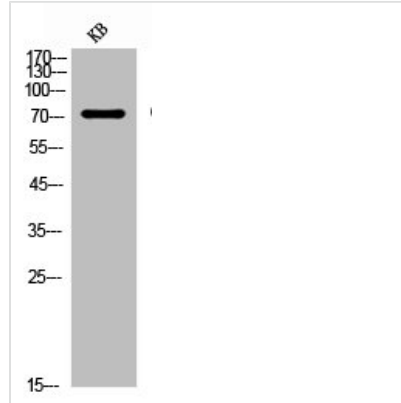
CD93 Antibody

| | |
|----------------------------|--|
| Product Code | CSB-PA006223 |
| Storage | Upon receipt, store at -20°C or -80°C. Avoid repeated freeze. |
| Uniprot No. | Q9NPY3 |
| Immunogen | Synthesized peptide derived from the Internal region of Human CD93. |
| Raised In | Rabbit |
| Species Reactivity | Human |
| Tested Applications | WB, ELISA; WB:1:500-1:2000, ELISA:1:10000 |
| Form | Liquid |
| Conjugate | Non-conjugated |
| Storage Buffer | Liquid in PBS containing 50% glycerol, 0.5% BSA and 0.02% sodium azide. |
| Purification Method | The antibody was affinity-purified from rabbit antiserum by affinity-chromatography using epitope-specific immunogen. |
| Isotype | IgG |
| Alias | CD93; C1QR1; MXRA4; Complement component C1q receptor; C1q/MBL/SPA receptor; C1qR; C1qR(p); C1qRp; CDw93; Complement component 1 q subcomponent receptor 1; Matrix-remodeling-associated protein 4; CD93 |
| Immunogen Species | Homo sapiens (Human) |
| Target Names | CD93 |

Image



Western Blot analysis of KB cells using CD93 Polyclonal Antibody



Western Blot analysis of KB cells using CD93 Polyclonal Antibody

Usage

For Research Use Only. Not for use in diagnostic or therapeutic procedures.