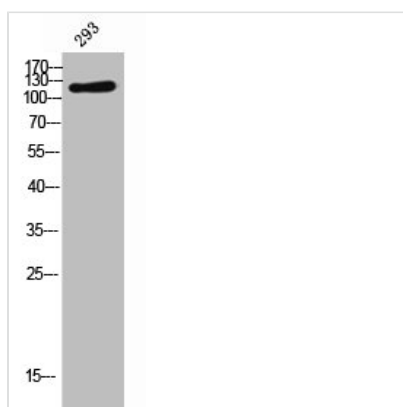




LIFR Antibody

Product Code	CSB-PA006260
Storage	Upon receipt, store at -20°C or -80°C. Avoid repeated freeze.
Uniprot No.	P42702
Immunogen	Synthesized peptide derived from the Internal region of Human LIFR.
Raised In	Rabbit
Species Reactivity	Human
Tested Applications	WB, ELISA; WB:1:500-1:2000, ELISA:1:10000
Form	Liquid
Conjugate	Non-conjugated
Storage Buffer	Liquid in PBS containing 50% glycerol, 0.5% BSA and 0.02% sodium azide.
Purification Method	The antibody was affinity-purified from rabbit antiserum by affinity-chromatography using epitope-specific immunogen.
Isotype	IgG
Alias	LIFR; Leukemia inhibitory factor receptor; LIF receptor; LIF-R; CD118
Immunogen Species	Homo sapiens (Human)
Target Names	LIFR

Image



Western Blot analysis of 293 cells using LIFR Polyclonal Antibody

Usage

For Research Use Only. Not for use in diagnostic or therapeutic procedures.