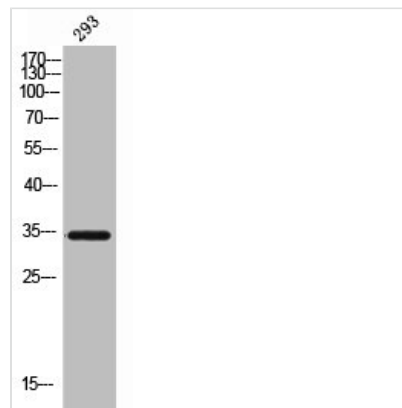




SDC1 Antibody

| | |
|----------------------------|---|
| Product Code | CSB-PA006267 |
| Storage | Upon receipt, store at -20°C or -80°C. Avoid repeated freeze. |
| Uniprot No. | P18827 |
| Immunogen | Synthesized peptide derived from the Internal region of Human CD138. |
| Raised In | Rabbit |
| Species Reactivity | Human |
| Tested Applications | WB, ELISA; WB:1:500-1:2000, ELISA:1:10000 |
| Form | Liquid |
| Conjugate | Non-conjugated |
| Storage Buffer | Liquid in PBS containing 50% glycerol, 0.5% BSA and 0.02% sodium azide. |
| Purification Method | The antibody was affinity-purified from rabbit antiserum by affinity-chromatography using epitope-specific immunogen. |
| Isotype | IgG |
| Alias | SDC1; SDC; Syndecan-1; SYND1; CD138 |
| Immunogen Species | Homo sapiens (Human) |
| Target Names | SDC1 |

Image



Western Blot analysis of 293 cells using CD138 Polyclonal Antibody