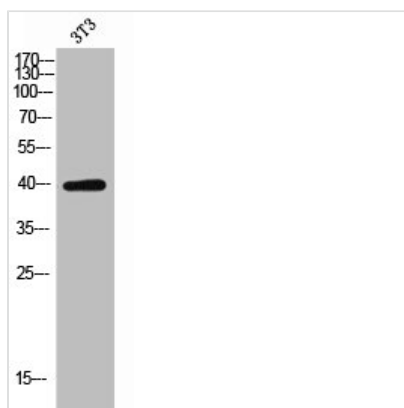




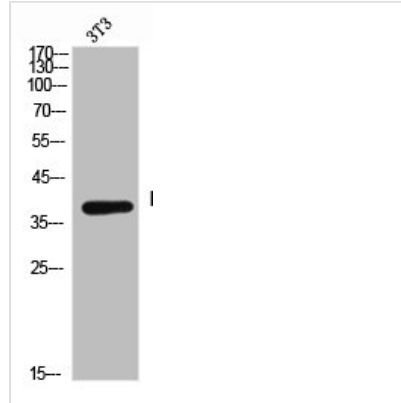
KIR2DL1 Antibody

Product Code	CSB-PA006278
Storage	Upon receipt, store at -20°C or -80°C. Avoid repeated freeze.
Uniprot No.	P43626
Immunogen	Synthesized peptide derived from the Internal region of Human CD158a.
Raised In	Rabbit
Species Reactivity	Human
Tested Applications	WB, ELISA; WB:1:500-1:2000, ELISA:1:10000
Form	Liquid
Conjugate	Non-conjugated
Storage Buffer	Liquid in PBS containing 50% glycerol, 0.5% BSA and 0.02% sodium azide.
Purification Method	The antibody was affinity-purified from rabbit antiserum by affinity-chromatography using epitope-specific immunogen.
Isotype	IgG
Alias	KIR2DL1; CD158A; NKAT1; Killer cell immunoglobulin-like receptor 2DL1; CD158 antigen-like family member A; MHC class I NK cell receptor; Natural killer-associated transcript 1; NKAT-1; p58 natural killer cell receptor clones CL-42/47.11; p58 NK receptor C
Immunogen Species	Homo sapiens (Human)
Target Names	KIR2DL1

Image



Western Blot analysis of 3T3 cells using CD158a Polyclonal Antibody



Western Blot analysis of NIH-3T3 cells using CD158a Polyclonal Antibody

Usage

For Research Use Only. Not for use in diagnostic or therapeutic procedures.