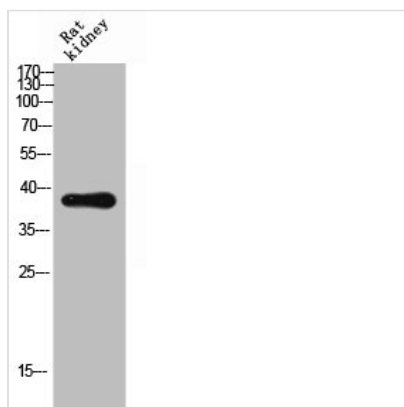




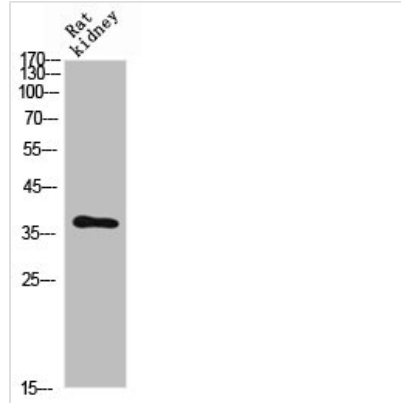
CD300C Antibody

Product Code	CSB-PA006279
Storage	Upon receipt, store at -20°C or -80°C. Avoid repeated freeze.
Uniprot No.	Q08708
Immunogen	Synthesized peptide derived from the Internal region of Human CD300c.
Raised In	Rabbit
Species Reactivity	Human
Tested Applications	WB, ELISA; WB:1:500-1:2000, ELISA:1:10000
Form	Liquid
Conjugate	Non-conjugated
Storage Buffer	Liquid in PBS containing 50% glycerol, 0.5% BSA and 0.02% sodium azide.
Purification Method	The antibody was affinity-purified from rabbit antiserum by affinity-chromatography using epitope-specific immunogen.
Isotype	IgG
Alias	CD300C; CMRF35; CMRF35A; CMRF35A1; IGSF16; CMRF35-like molecule 6; CLM-6; CD300 antigen-like family member C; CMRF35-A1; CMRF-35; Immunoglobulin superfamily member 16; IgSF16; CD300c
Immunogen Species	Homo sapiens (Human)
Target Names	CD300C

Image



Western Blot analysis of RAT-kidney cells using CD300c Polyclonal Antibody



Western Blot analysis of rat kidney cells using CD300c Polyclonal Antibody

Usage

For Research Use Only. Not for use in diagnostic or therapeutic procedures.