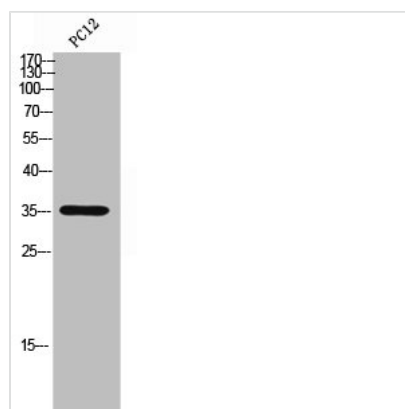




ATP1B3 Antibody

Product Code	CSB-PA006283
Storage	Upon receipt, store at -20°C or -80°C. Avoid repeated freeze.
Uniprot No.	P54709
Immunogen	Synthesized peptide derived from the C-terminal region of Human CD298.
Raised In	Rabbit
Species Reactivity	Human
Tested Applications	WB, ELISA; WB:1:500-1:2000, ELISA:1:10000
Form	Liquid
Conjugate	Non-conjugated
Storage Buffer	Liquid in PBS containing 50% glycerol, 0.5% BSA and 0.02% sodium azide.
Purification Method	The antibody was affinity-purified from rabbit antiserum by affinity-chromatography using epitope-specific immunogen.
Isotype	IgG
Alias	ATP1B3; Sodium/potassium-transporting ATPase subunit beta-3; Sodium/potassium-dependent ATPase subunit beta-3; ATPB-3; CD298
Immunogen Species	Homo sapiens (Human)
Target Names	ATP1B3

Image



Western Blot analysis of PC12 cells using CD298 Polyclonal Antibody

Usage

For Research Use Only. Not for use in diagnostic or therapeutic procedures.