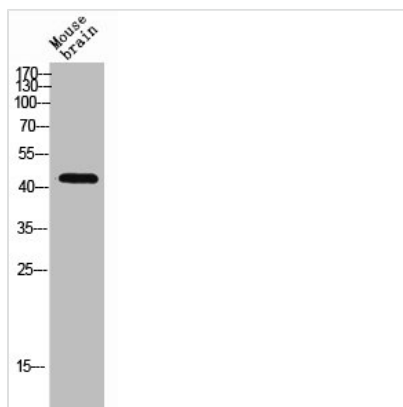




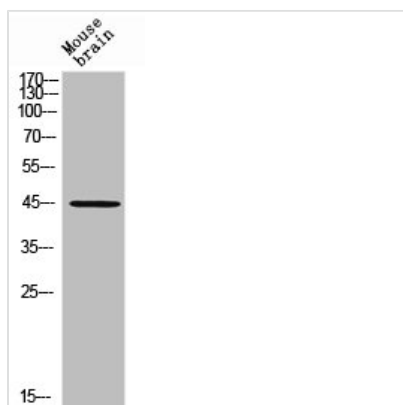
RHD Antibody

| | |
|----------------------------|---|
| Product Code | CSB-PA006286 |
| Storage | Upon receipt, store at -20°C or -80°C. Avoid repeated freeze. |
| Uniprot No. | Q02161 |
| Immunogen | Synthesized peptide derived from the Internal region of Human CD240d. |
| Raised In | Rabbit |
| Species Reactivity | Human |
| Tested Applications | WB, ELISA; WB:1:500-1:2000, ELISA:1:10000 |
| Form | Liquid |
| Conjugate | Non-conjugated |
| Storage Buffer | Liquid in PBS containing 50% glycerol, 0.5% BSA and 0.02% sodium azide. |
| Purification Method | The antibody was affinity-purified from rabbit antiserum by affinity-chromatography using epitope-specific immunogen. |
| Isotype | IgG |
| Alias | RHD; Blood group Rh(D) polypeptide; RHXIII; Rh polypeptide 2; RhPII; Rhesus D antigen; CD240D |
| Immunogen Species | Homo sapiens (Human) |
| Target Names | RHD |

Image



Western Blot analysis of MOUSE-BRAIN cells using CD240d Polyclonal Antibody



Western Blot analysis of mouse brain cells using CD240d Polyclonal Antibody