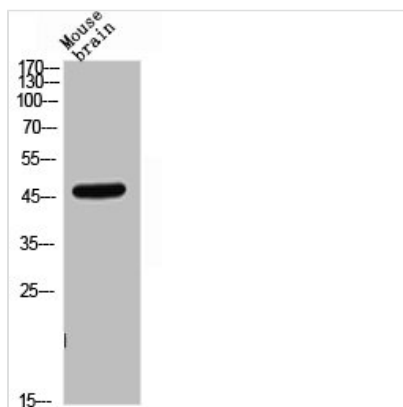




CD209 Antibody

Product Code	CSB-PA006293
Storage	Upon receipt, store at -20°C or -80°C. Avoid repeated freeze.
Uniprot No.	Q9NNX6
Immunogen	Synthesized peptide derived from the Internal region of Human CD209.
Raised In	Rabbit
Species Reactivity	Human,Mouse,Rat
Tested Applications	WB, ELISA; WB:1:500-1:2000, ELISA:1:10000
Form	Liquid
Conjugate	Non-conjugated
Storage Buffer	Liquid in PBS containing 50% glycerol, 0.5% BSA and 0.02% sodium azide.
Purification Method	The antibody was affinity-purified from rabbit antiserum by affinity-chromatography using epitope-specific immunogen.
Isotype	IgG
Alias	CD209; CLEC4L; CD209 antigen; C-type lectin domain family 4 member L; Dendritic cell-specific ICAM-3-grabbing non-integrin 1; DC-SIGN; DC-SIGN1; CD209
Immunogen Species	Homo sapiens (Human)
Target Names	CD209

Image



Western Blot analysis of mouse brain cells using CD209 Polyclonal Antibody

Usage

For Research Use Only. Not for use in diagnostic or therapeutic procedures.