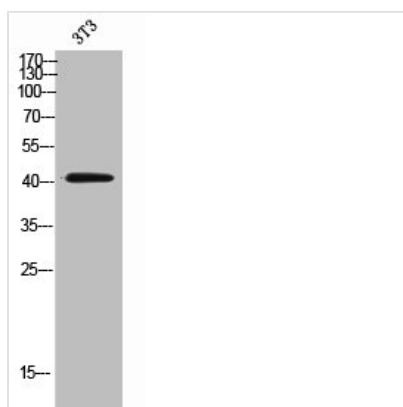




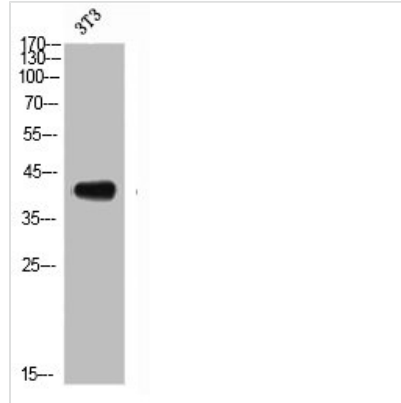
CCR2 Antibody

Product Code	CSB-PA006295
Storage	Upon receipt, store at -20°C or -80°C. Avoid repeated freeze.
Uniprot No.	P41597
Immunogen	Synthesized peptide derived from the N-terminal region of Human CD192.
Raised In	Rabbit
Species Reactivity	Human
Tested Applications	WB, ELISA; WB:1:500-1:2000, ELISA:1:10000
Form	Liquid
Conjugate	Non-conjugated
Storage Buffer	Liquid in PBS containing 50% glycerol, 0.5% BSA and 0.02% sodium azide.
Purification Method	The antibody was affinity-purified from rabbit antiserum by affinity-chromatography using epitope-specific immunogen.
Isotype	IgG
Alias	CCR2; CMKBR2; C-C chemokine receptor type 2; C-C CKR-2; CC-CKR-2; CCR-2; CCR2; Monocyte chemoattractant protein 1 receptor; MCP-1-R; CD192
Immunogen Species	Homo sapiens (Human)
Target Names	CCR2

Image



Western Blot analysis of 3T3 cells using CD192 Polyclonal Antibody



Western Blot analysis of NIH-3T3 cells using CD192 Polyclonal Antibody

Usage

For Research Use Only. Not for use in diagnostic or therapeutic procedures.