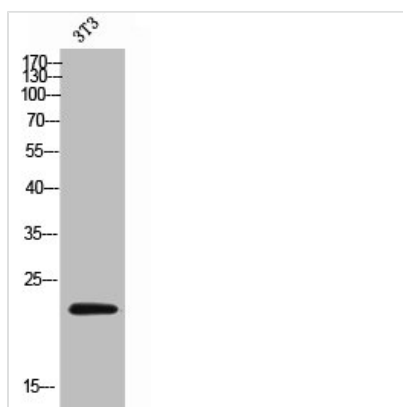




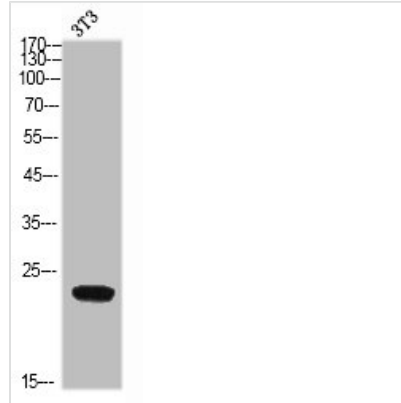
CD300LD Antibody

Product Code	CSB-PA006296
Storage	Upon receipt, store at -20°C or -80°C. Avoid repeated freeze.
Uniprot No.	Q6UXZ3
Immunogen	Synthesized peptide derived from the Internal region of Human CD300d.
Raised In	Rabbit
Species Reactivity	Human
Tested Applications	WB, ELISA; WB:1:500-1:2000, ELISA:1:10000
Form	Liquid
Conjugate	Non-conjugated
Storage Buffer	Liquid in PBS containing 50% glycerol, 0.5% BSA and 0.02% sodium azide.
Purification Method	The antibody was affinity-purified from rabbit antiserum by affinity-chromatography using epitope-specific immunogen.
Isotype	IgG
Alias	CD300LD; CD300D; CMRF35A4; CMRF35-like molecule 4; CLM-4; CD300 antigen-like family member D; CMRF35-A4; CD300d
Immunogen Species	Homo sapiens (Human)
Target Names	CD300LD

Image



Western Blot analysis of 3T3 cells using CD300d Polyclonal Antibody



Western Blot analysis of NIH-3T3 cells using CD300d Polyclonal Antibody

Usage

For Research Use Only. Not for use in diagnostic or therapeutic procedures.