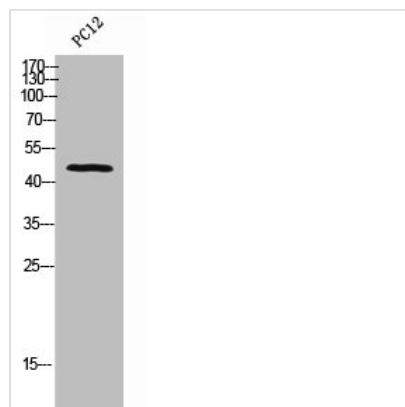




BMP15 Antibody

Product Code	CSB-PA006330
Storage	Upon receipt, store at -20°C or -80°C. Avoid repeated freeze.
Uniprot No.	O95972
Immunogen	Synthesized peptide derived from the Internal region of Human BMP-15.
Raised In	Rabbit
Species Reactivity	Human
Tested Applications	WB, ELISA; WB:1:500-1:2000, ELISA:1:10000
Form	Liquid
Conjugate	Non-conjugated
Storage Buffer	Liquid in PBS containing 50% glycerol, 0.5% BSA and 0.02% sodium azide.
Purification Method	The antibody was affinity-purified from rabbit antiserum by affinity-chromatography using epitope-specific immunogen.
Isotype	IgG
Alias	BMP15; GDF9B; Bone morphogenetic protein 15; BMP-15; Growth/differentiation factor 9B; GDF-9B
Immunogen Species	Homo sapiens (Human)
Target Names	BMP15

Image



Western Blot analysis of PC-12 cells using BMP-15 Polyclonal Antibody