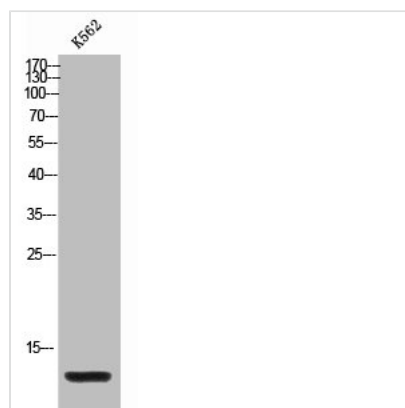




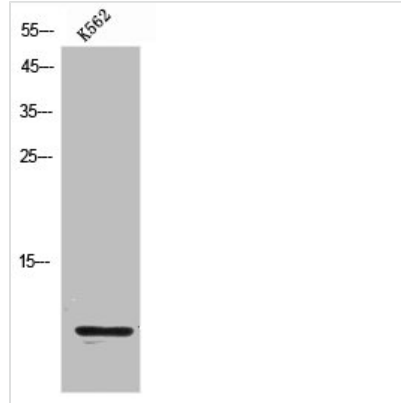
CCL4L1 Antibody

Product Code	CSB-PA006332
Storage	Upon receipt, store at -20°C or -80°C. Avoid repeated freeze.
Uniprot No.	Q8NHW4
Immunogen	Synthesized peptide derived from the Internal region of Human MIP-1b.
Raised In	Rabbit
Species Reactivity	Human
Tested Applications	WB, ELISA; WB:1:500-1:2000, ELISA:1:10000
Form	Liquid
Conjugate	Non-conjugated
Storage Buffer	Liquid in PBS containing 50% glycerol, 0.5% BSA and 0.02% sodium azide.
Purification Method	The antibody was affinity-purified from rabbit antiserum by affinity-chromatography using epitope-specific immunogen.
Isotype	IgG
Alias	CCL4L1; CCL4L; LAG1; SCYA4L1; CCL4L2; CCL4L; SCYA4L2; C-C motif chemokine 4-like; Lymphocyte activation gene 1 protein; LAG-1; Macrophage inflammatory protein 1-beta; MIP-1-beta; Monocyte adherence-induced protein 5-alpha; Small-inducible cytokine A4-like
Immunogen Species	Homo sapiens (Human)
Target Names	CCL4L1

Image



Western Blot analysis of K562 cells using MIP-1b Polyclonal Antibody



Western Blot analysis of K562 cells using MIP-1b Polyclonal Antibody

Usage

For Research Use Only. Not for use in diagnostic or therapeutic procedures.