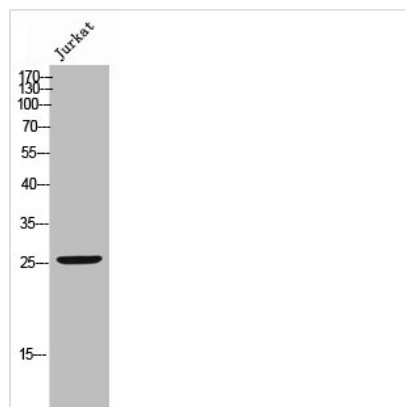




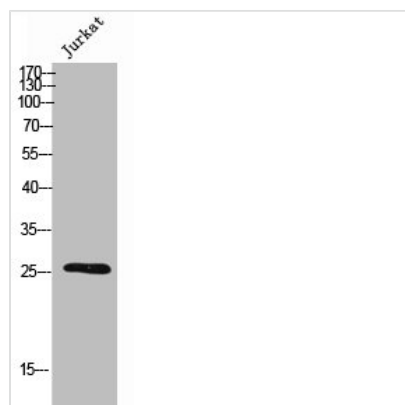
Phospho-BCL2 (S70) Antibody

| | |
|----------------------------|---|
| Product Code | CSB-PA006342 |
| Storage | Upon receipt, store at -20°C or -80°C. Avoid repeated freeze. |
| Uniprot No. | P10415 |
| Immunogen | Synthesized peptide derived from Human Bcl-2 around the phosphorylation site of S70. |
| Raised In | Rabbit |
| Species Reactivity | Mouse,Rat |
| Tested Applications | WB, ELISA; WB:1:500-1:2000, ELISA:1:40000 |
| Form | Liquid |
| Conjugate | Non-conjugated |
| Storage Buffer | Liquid in PBS containing 50% glycerol, 0.5% BSA and 0.02% sodium azide. |
| Purification Method | The antibody was affinity-purified from rabbit antiserum by affinity-chromatography using epitope-specific immunogen. |
| Isotype | IgG |
| Alias | BCL2; Apoptosis regulator Bcl-2 |
| Immunogen Species | Mus musculus (Mouse) |
| Target Names | BCL2 |

Image



Western Blot analysis of JK cells using Phospho-Bcl-2 (S70) Polyclonal Antibody



Western Blot analysis of Jurkat cells using
Phospho-Bcl-2 (S70) Polyclonal Antibody