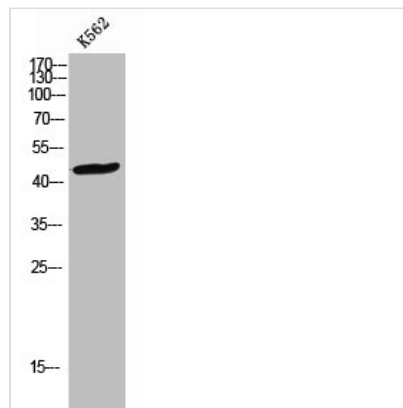




CCR2 Antibody

Product Code	CSB-PA006349
Storage	Upon receipt, store at -20°C or -80°C. Avoid repeated freeze.
Uniprot No.	O55193
Immunogen	Synthesized peptide derived from the C-terminal region of Rat Ccr2.
Raised In	Rabbit
Species Reactivity	Rat, Human
Tested Applications	WB, IF, ELISA; WB:1:500-1:2000, IF:1:200-1:1000, ELISA:1:5000
Form	Liquid
Conjugate	Non-conjugated
Storage Buffer	Liquid in PBS containing 50% glycerol, 0.5% BSA and 0.02% sodium azide.
Purification Method	The antibody was affinity-purified from rabbit antiserum by affinity-chromatography using epitope-specific immunogen.
Isotype	IgG
Product Type	Polyclonal Antibody
Immunogen Species	Rattus norvegicus (Rat)
Target Names	Ccr2

Image



Western Blot analysis of K562 cells using CCR-2 Polyclonal Antibody

Usage

For Research Use Only. Not for use in diagnostic or therapeutic procedures.