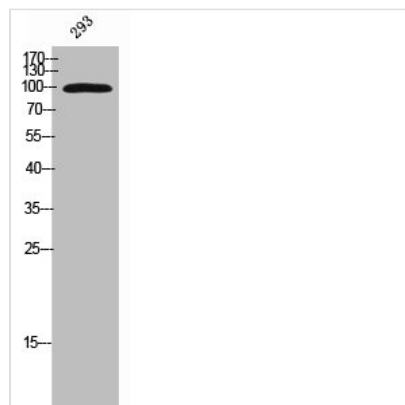




Phospho-KIF20A (S528) Antibody

Product Code	CSB-PA006385
Storage	Upon receipt, store at -20°C or -80°C. Avoid repeated freeze.
Uniprot No.	O95235
Immunogen	Synthesized peptide derived from Human KIF20A around the phosphorylation site of S528.
Raised In	Rabbit
Species Reactivity	Human
Tested Applications	WB, IHC, ELISA; WB:1:500-1:2000, IHC:1:100-1:300, ELISA:1:5000
Form	Liquid
Conjugate	Non-conjugated
Storage Buffer	Liquid in PBS containing 50% glycerol, 0.5% BSA and 0.02% sodium azide.
Purification Method	The antibody was affinity-purified from rabbit antiserum by affinity-chromatography using epitope-specific immunogen.
Isotype	IgG
Alias	KIF20A; MKLP2; RAB6KIFL; Kinesin-like protein KIF20A; GG10_2; Mitotic kinesin-like protein 2; MKlp2; Rab6-interacting kinesin-like protein; Rabkinesin-6
Immunogen Species	Homo sapiens (Human)
Target Names	KIF20A

Image



Western Blot analysis of 293 cells using Phospho-KIF20A (S528) Polyclonal Antibody

Usage

For Research Use Only. Not for use in diagnostic or therapeutic procedures.