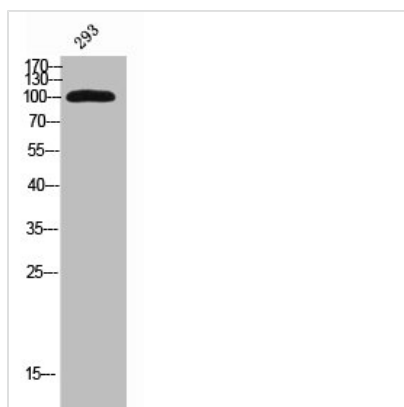




# KIF20A Antibody

<b>Product Code</b>	CSB-PA006386
<b>Storage</b>	Upon receipt, store at -20°C or -80°C. Avoid repeated freeze.
<b>Uniprot No.</b>	O95235
<b>Immunogen</b>	Synthesized peptide derived from Human KIF20A around the non-phosphorylation site of S528.
<b>Raised In</b>	Rabbit
<b>Species Reactivity</b>	Human
<b>Tested Applications</b>	WB, IHC, IF, ELISA; WB:1:500-1:2000, IHC:1:100-1:300, IF:1:200-1:1000, ELISA:1:20000
<b>Form</b>	Liquid
<b>Conjugate</b>	Non-conjugated
<b>Storage Buffer</b>	Liquid in PBS containing 50% glycerol, 0.5% BSA and 0.02% sodium azide.
<b>Purification Method</b>	The antibody was affinity-purified from rabbit antiserum by affinity-chromatography using epitope-specific immunogen.
<b>Isotype</b>	IgG
<b>Alias</b>	KIF20A; MKLP2; RAB6KIFL; Kinesin-like protein KIF20A; GG10_2; Mitotic kinesin-like protein 2; MKlp2; Rab6-interacting kinesin-like protein; Rabkinesin-6
<b>Immunogen Species</b>	Homo sapiens (Human)
<b>Target Names</b>	KIF20A

## Image



Western Blot analysis of 293 cells using KIF20A Polyclonal Antibody

**Usage** For Research Use Only. Not for use in diagnostic or therapeutic procedures.