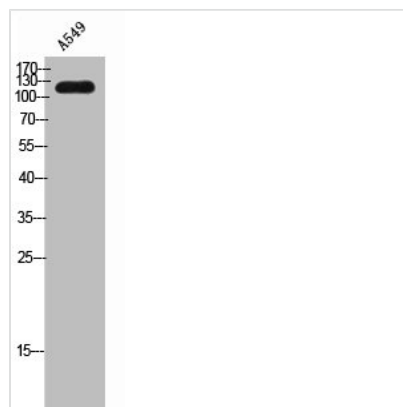




SUGP2 Antibody

Product Code	CSB-PA006404
Storage	Upon receipt, store at -20°C or -80°C. Avoid repeated freeze.
Uniprot No.	Q8IX01
Immunogen	Synthesized peptide derived from the Internal region of Human SFRS14.
Raised In	Rabbit
Species Reactivity	Human
Tested Applications	WB, ELISA; WB:1:500-1:2000, ELISA:1:5000
Form	Liquid
Conjugate	Non-conjugated
Storage Buffer	Liquid in PBS containing 50% glycerol, 0.5% BSA and 0.02% sodium azide.
Purification Method	The antibody was affinity-purified from rabbit antiserum by affinity-chromatography using epitope-specific immunogen.
Isotype	IgG
Alias	SUGP2; KIAA0365; SFRS14; SURP and G-patch domain-containing protein 2; Arginine/serine-rich-splicing factor 14; Splicing factor; arginine/serine-rich 14
Immunogen Species	Homo sapiens (Human)
Target Names	SUGP2

Image



Western Blot analysis of A549 cells using SFRS14 Polyclonal Antibody

Usage

For Research Use Only. Not for use in diagnostic or therapeutic procedures.