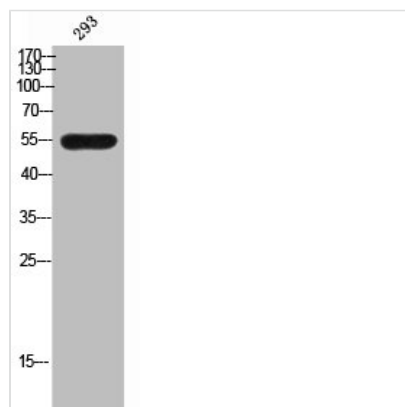




WASF2 Antibody

Product Code	CSB-PA006408
Storage	Upon receipt, store at -20°C or -80°C. Avoid repeated freeze.
Uniprot No.	Q9Y6W5
Immunogen	Synthesized peptide derived from the Internal region of Human WAVE2.
Raised In	Rabbit
Species Reactivity	Human,Mouse,Rat
Tested Applications	WB, IHC, ELISA; WB:1:500-1:2000, IHC:1:100-1:300, ELISA:1:5000
Form	Liquid
Conjugate	Non-conjugated
Storage Buffer	Liquid in PBS containing 50% glycerol, 0.5% BSA and 0.02% sodium azide.
Purification Method	The antibody was affinity-purified from rabbit antiserum by affinity-chromatography using epitope-specific immunogen.
Isotype	IgG
Alias	WASF2; WAVE2; Wiskott-Aldrich syndrome protein family member 2; WASP family protein member 2; Protein WAVE-2; Verprolin homology domain-containing protein 2
Immunogen Species	Homo sapiens (Human)
Target Names	WASF2

Image



Western Blot analysis of 293 cells using WAVE2 Polyclonal Antibody