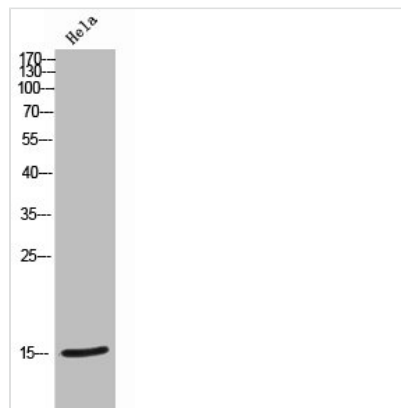




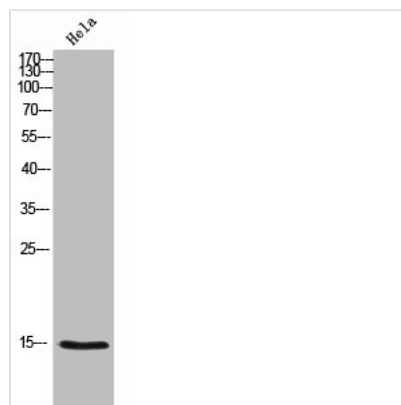
NUTF2 Antibody

Product Code	CSB-PA006428
Storage	Upon receipt, store at -20°C or -80°C. Avoid repeated freeze.
Uniprot No.	P61970
Immunogen	Synthesized peptide derived from the Internal region of Human NTF2.
Raised In	Rabbit
Species Reactivity	Human,Mouse,Rat
Tested Applications	WB, IHC, ELISA; WB:1:500-1:2000, IHC:1:100-1:300, ELISA:1:20000
Form	Liquid
Conjugate	Non-conjugated
Storage Buffer	Liquid in PBS containing 50% glycerol, 0.5% BSA and 0.02% sodium azide.
Purification Method	The antibody was affinity-purified from rabbit antiserum by affinity-chromatography using epitope-specific immunogen.
Isotype	IgG
Alias	NUTF2; NTF2; Nuclear transport factor 2; NTF-2; Placental protein 15; PP15
Immunogen Species	Homo sapiens (Human)
Target Names	NUTF2

Image



Western Blot analysis of HeLa cells using NTF2 Polyclonal Antibody



Western Blot analysis of HeLa cells using NTF2 Polyclonal Antibody



Usage

For Research Use Only. Not for use in diagnostic or therapeutic procedures.