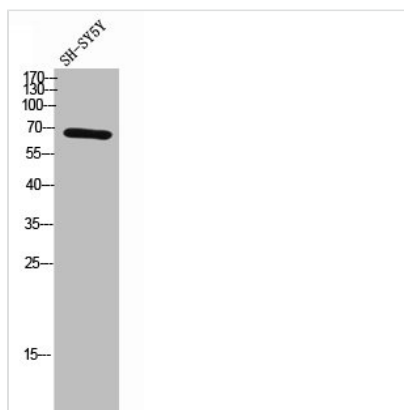




SLU7 Antibody

Product Code	CSB-PA006636
Storage	Upon receipt, store at -20°C or -80°C. Avoid repeated freeze.
Uniprot No.	O95391
Immunogen	Synthesized peptide derived from the Internal region of Human SLU7.
Raised In	Rabbit
Species Reactivity	Human,Mouse,Rat
Tested Applications	WB, ELISA; WB:1:500-1:2000, ELISA:1:40000
Form	Liquid
Conjugate	Non-conjugated
Storage Buffer	Liquid in PBS containing 50% glycerol, 0.5% BSA and 0.02% sodium azide.
Purification Method	The antibody was affinity-purified from rabbit antiserum by affinity-chromatography using epitope-specific immunogen.
Isotype	IgG
Alias	SLU7; Pre-mRNA-splicing factor SLU7; hSlu7
Immunogen Species	Homo sapiens (Human)
Target Names	SLU7

Image



Western Blot analysis of SH-SY5Y cells using SLU7 Polyclonal Antibody

Usage

For Research Use Only. Not for use in diagnostic or therapeutic procedures.