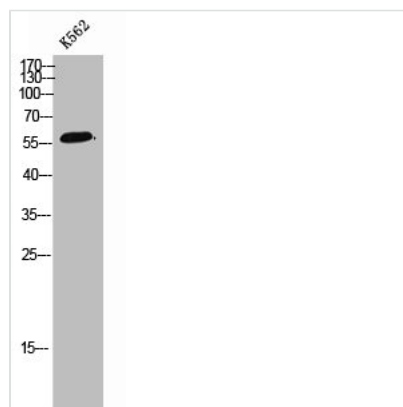




POLR3C Antibody

Product Code	CSB-PA006669
Storage	Upon receipt, store at -20°C or -80°C. Avoid repeated freeze.
Uniprot No.	Q9BUI4
Immunogen	Synthesized peptide derived from the Internal region of Human POLR3C.
Raised In	Rabbit
Species Reactivity	Human
Tested Applications	WB, ELISA; WB:1:500-1:2000, ELISA:1:40000
Form	Liquid
Conjugate	Non-conjugated
Storage Buffer	Liquid in PBS containing 50% glycerol, 0.5% BSA and 0.02% sodium azide.
Purification Method	The antibody was affinity-purified from rabbit antiserum by affinity-chromatography using epitope-specific immunogen.
Isotype	IgG
Alias	POLR3C; DNA-directed RNA polymerase III subunit RPC3; RNA polymerase III subunit C3; DNA-directed RNA polymerase III subunit C; RNA polymerase III 62 kDa subunit; RPC62
Immunogen Species	Homo sapiens (Human)
Target Names	POLR3C

Image



Western Blot analysis of K562 cells using POLR3C Polyclonal Antibody

Usage For Research Use Only. Not for use in diagnostic or therapeutic procedures.