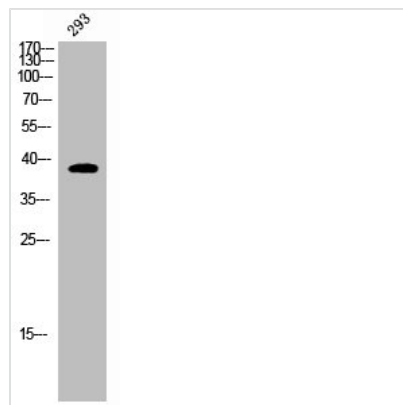




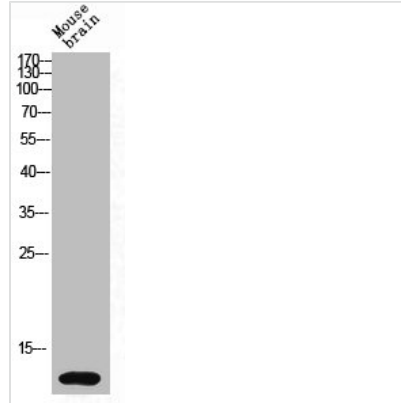
CD226 Antibody

Product Code	CSB-PA006679
Storage	Upon receipt, store at -20°C or -80°C. Avoid repeated freeze.
Uniprot No.	Q15762
Immunogen	Synthesized peptide derived from Human DNAM-1 around the non-phosphorylation site of S329.
Raised In	Rabbit
Species Reactivity	Human,Mouse,Monkey
Tested Applications	WB, IHC, IF, ELISA; WB:1:500-1:2000, IHC:1:100-1:300, IF:1:200-1:1000, ELISA:1:20000
Form	Liquid
Conjugate	Non-conjugated
Storage Buffer	Liquid in PBS containing 50% glycerol, 0.5% BSA and 0.02% sodium azide.
Purification Method	The antibody was affinity-purified from rabbit antiserum by affinity-chromatography using epitope-specific immunogen.
Isotype	IgG
Alias	CD226; DNAM1; CD226 antigen; DNAX accessory molecule 1; DNAM-1; CD antigen CD226
Immunogen Species	Homo sapiens (Human)
Target Names	CD226

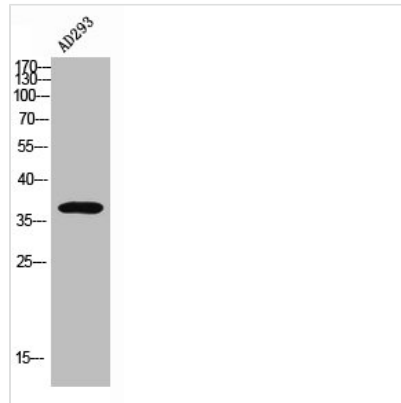
Image



Western Blot analysis of COS7 cells using DNAM-1 Polyclonal Antibody



Western Blot analysis of mouse-brain cells using DNAM-1 Polyclonal Antibody



Western Blot analysis of AD293 using DNAM-1 Polyclonal Antibody

Usage

For Research Use Only. Not for use in diagnostic or therapeutic procedures.